

# Security System Control

## Software

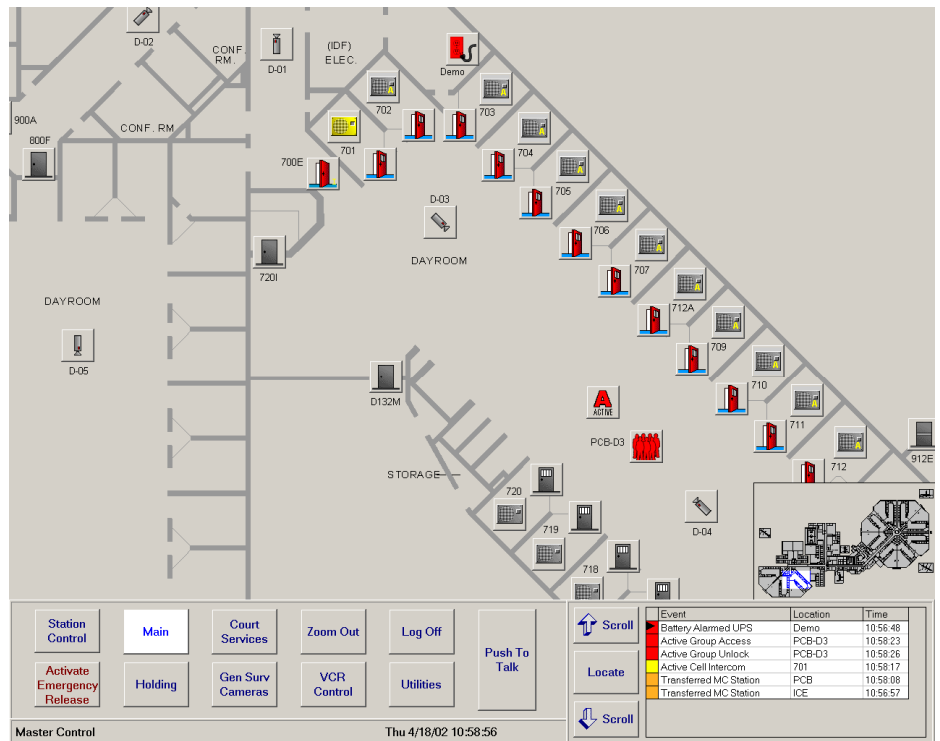
Security control software designed specifically for the detention industry.

### Simple to Operate

Only Secured State graphics are dynamically panned rather than paged. Changing views is simply a matter of dragging a finger to the new location – no fumbling through multiple pages or remembering previous page locations.

To see the big picture, only Secured State provides a condensed graphical view of the entire area with current indication for every monitored device.

Secured State's event-driven approach brings the work to the operator. Pending work is always immediately accessible from a prioritized and color-coded event queue.



With Secured State's simplified graphic design and event driven approach, the system is easy to learn and to operate. Fewer decisions are required, and fewer mistakes are made – especially during stressful situations.

### Powerful to Use

Secured State's transfer and takeover functions provide 100% facility control and/or monitoring from one location. And with our unique parallel PLC processing, response time remains constant. Remote control and monitoring is also possible with a secure network connection.

All computer workstations operate independently. The removal of any one workstation has no effect on any other workstation. In addition, all computer workstations run the same software. Therefore, any workstation can replace any other workstation.

All user operations are regulated through administrator-assigned security permissions. A historical account of all system events (along with the current operator and date/time) is maintained in an encrypted event log.

For a full specification contact Creative Technologies or your local representative.